



LI6400Group

Control Multiple LI-6400s

LI6400Group is a cross-platform application (Windows™, Mac OS X, and Linux) for viewing and/or controlling one or more LI-6400 / LI-6400XT Photosynthesis Systems.

[Add a Display / Connection](#)

Show the keyboard

[Chat Window](#)

jon@PSC-1276

CO2S_μmol	H2OS_mmol	RHcmbr%	RHirga%
613.9	-1.396	-5.11	-5.11
EFFLUX	C2avg	Wavg	
0	0.0	0.00	
Tsoil_C	Tsch_C	Program Status	
-505.04	22.11	0: Stopped	
Open	<view	<close	<add
Logfile	file>	file>	remark>

Ed@PSC-2207

CO2R_μmol	CO2S_μmol	H2OR_mmol	H2OS_mmol
0.3	1.6	21.394	21.289
ΔCO2_μmol	ΔH2O_mmol	Flow_μmol	RH_S_%
1.2	-0.105	499.5	72.30
Photo	Cond	CI	Trmmol
-1.03	-0.0122	-132	-0.0894
Open	<view	<close	<add
Logfile	file>	file>	remark>

PSC-1276

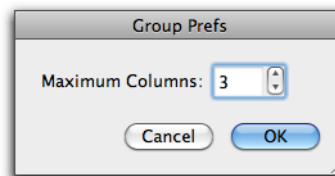
Remove an inactive display

Make a new connection

Typed keystrokes are sent to all units with a red box. See [Sending keystrokes](#)

The number of displays per line is set from the Preferences Dialog:

Other capability: [Fonts](#), [Colors](#), [Screen Capture](#)




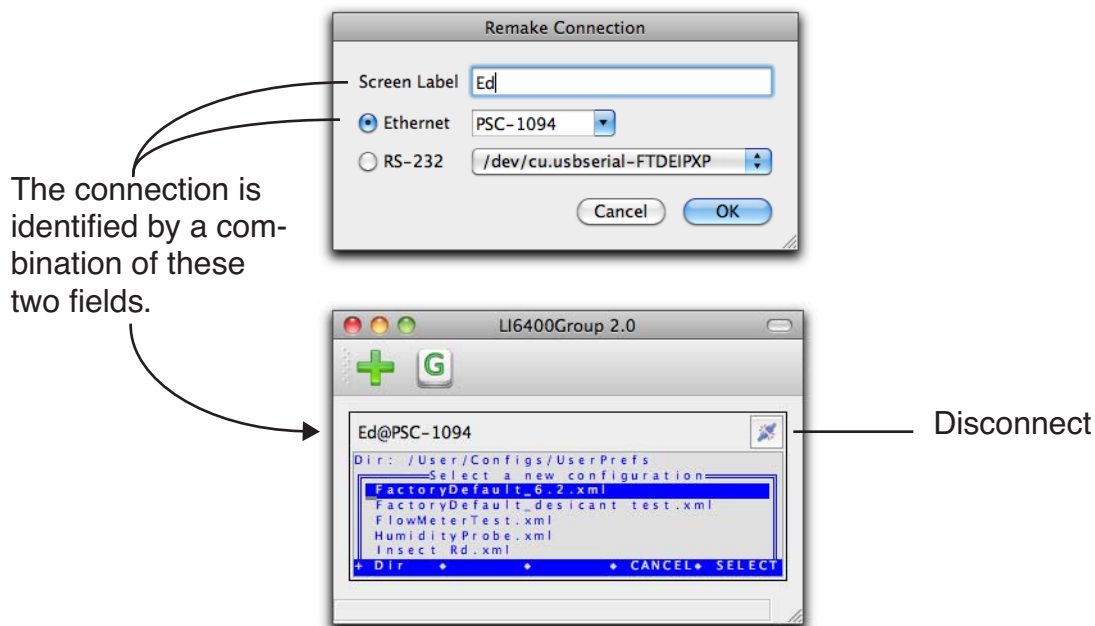
4421 Superior St • P.O.Box 4425 • Lincoln, NE 68504 USA
North America: 800-447-3576 • International: 402-467-3576
Fax 402-467-2819
envsupport@licor.com • www.licor.com


Connections

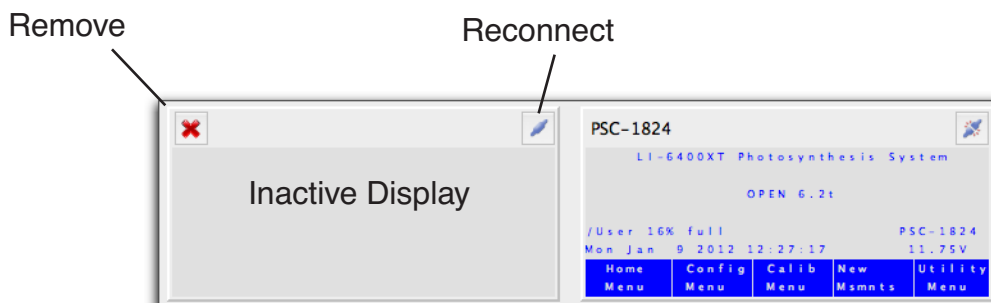
The main window can hold any number of displays; each display represents a connection to a different LI-6400.

Add a Display / Connection

Make a new display and connection by pressing the Add button  on the tool bar. You'll get a [Connection Dialog](#), and specify the desired LI-6400.

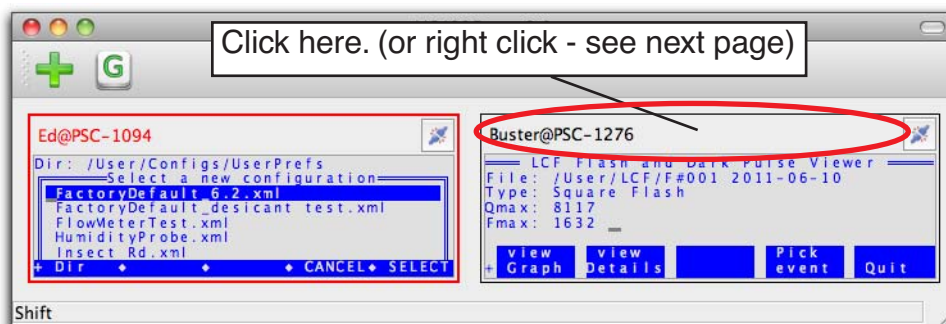


You can also reconnect an inactive display to an LI-6400 by pressing the reconnect button . A [Connection Dialog](#) will appear, allowing you to reconnect to the previous LI-6400 or specify a new one.



Sending keystrokes

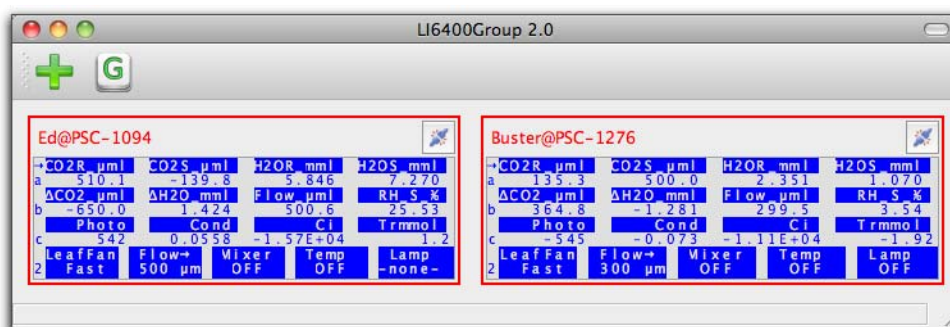
To send keystrokes to an LI-6400, click on the space above the connection display, and the bounding box and text will become red, signifying that typed characters will be sent to that unit. If it is already red, then clicking there will turn it back to grey.



Kbd comm active

Kbd comm inactive

To send characters to multiple units simultaneously, simply click on the headers of the ones you want included so that they all have red borders.

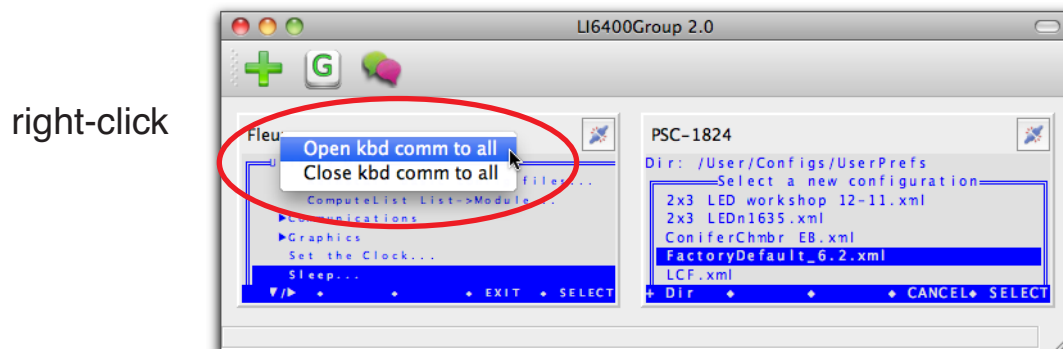


1. Keystrokes made on your computer's keyboard are sent to LI-6400s only when LI6400Group's window is the active window on the desktop. But, they are only sent to LI-6400s whose displays are highlighted (red).

2. Keystrokes made by clicking on LI6400Group's on-screen keyboard are always sent to highlighted displays.

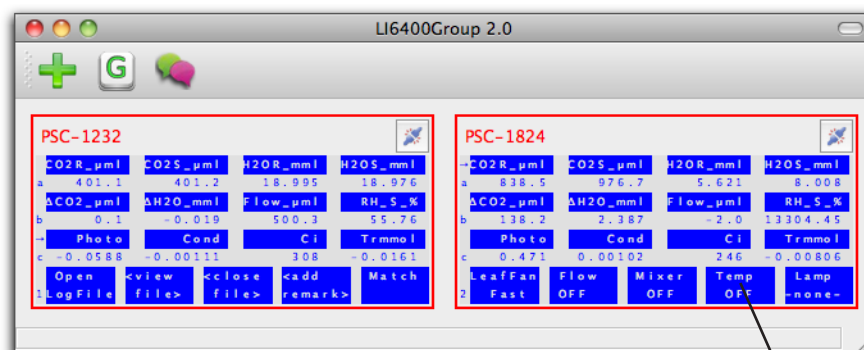
3. You can send a fct key keystroke by clicking on the fct key label of a red highlighted display. However, only that LI-6400 will receive that key stroke; it won't go to any other red-highlighted display. See [Function Keys](#).

To start or stop keyboard communication with *all* active displays, simply right-click in the space above the connection display.



Function Keys

Function key keystrokes can be sent by pressing f1 thru f5 on your computer keyboard, or by pressing the fct keys on the screen keyboard, or by clicking on the screen fct key label.



Click here to send
f4 to BOTH units

Click here to send f4
to ONLY this unit.

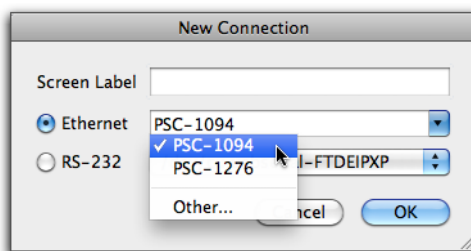


Connection Dialog

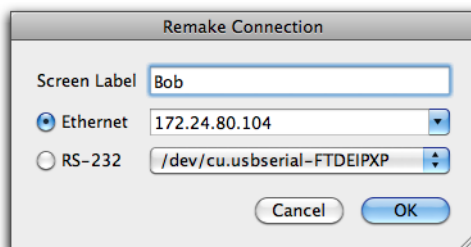
The Connection Dialog allows you to select Ethernet or Serial.

Ethernet

The Ethernet drop-down list should show all LI-6400XTs that are connected to your local network.



If you don't see the one you are looking for, check its Network Status (in the Utility Menu of OPEN), and make sure it is connected, and has a valid IP address. If nothing else, you can select Other... from the Connection drop down (above), and then enter the IP number.



Serial

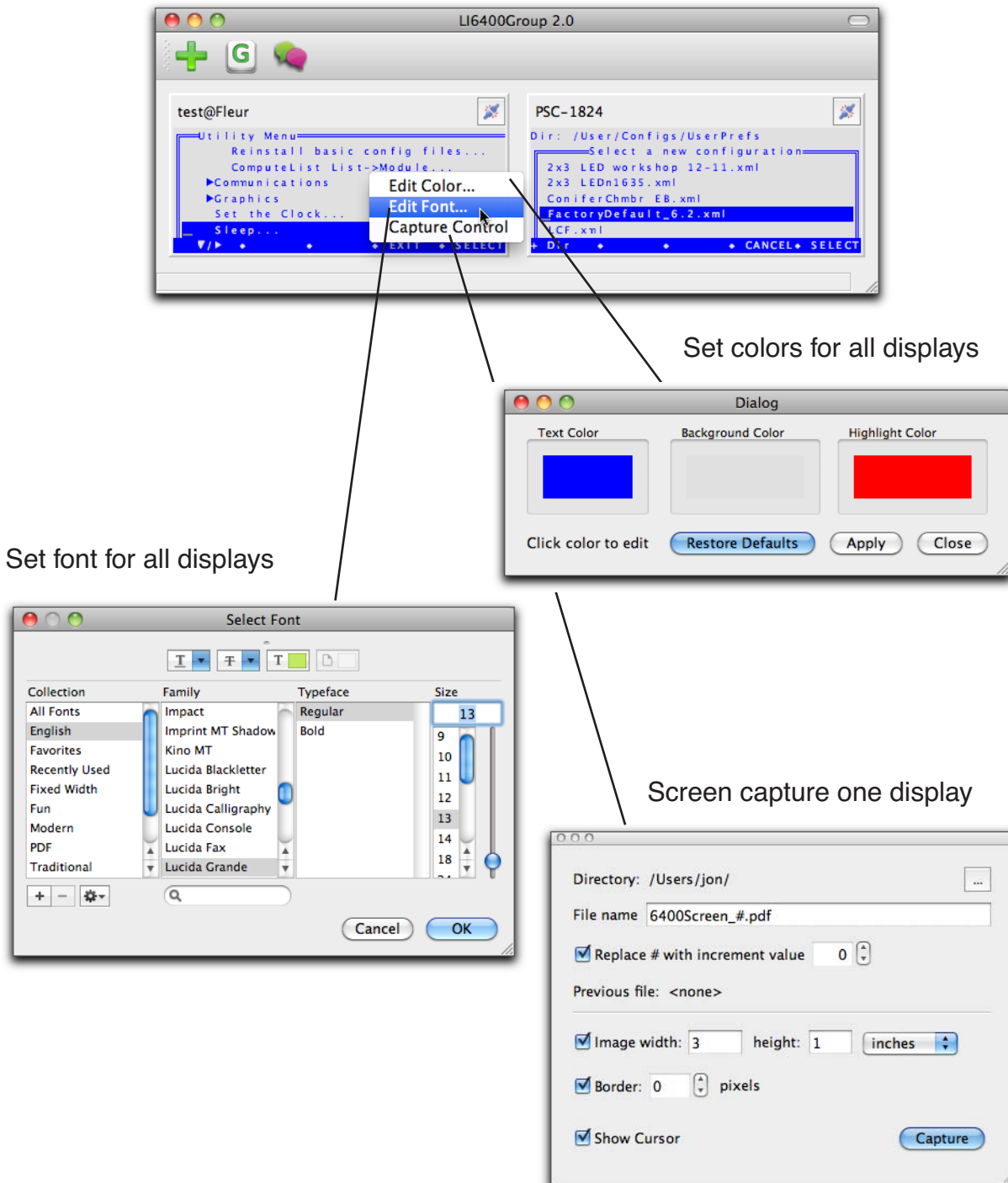
The drop down list beside the RS-232 button should show the available serial ports on your computer. Select the appropriate one.

In order to communicate *over the serial port*, however, you will have to put the LI-6400 into LTerm mode. (OPEN's main screen, then press L).



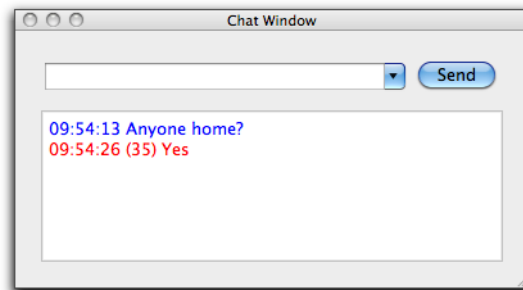
Fonts, Colors, Screen Capture

Right click a display to get the context menu. From there, you can change fonts and/or colors for all displays, or do a screen capture from the display on which you right-clicked.



Chat Window

The chat window allows you to communicate with anyone who is also remotely communicating with an LI-6400.



You can receive chat traffic from any LI-6400 you have an active connection with, but you can only send chat traffic to connections that also have open keyboard communication (red box).